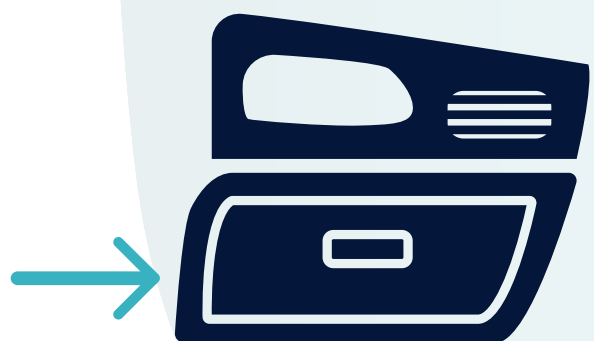


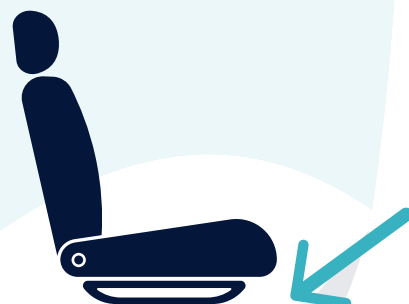
SHIELD STOLEN VEHICLE RECOVERY

SUGGESTED DEVICE PLACEMENT LOCATIONS

Shield is a battery-operated device and thus does not require installation in your vehicle. Simply place the device in the vehicle and go! We recommend placing the device inside the vehicle in a secure location such as the glove compartment or under the driver or passenger seat.



CAR GLOVE COMPARTMENT



DRIVER/PASSENGER SEAT

Do not place the device in the engine compartment or near electronics that can be harmed by a strong magnet.



ENGINE COMPARTMENT



CAR BATTERY